

THE SENATE

ADDISON COUNTY



CLAIRE D. AYER, Weybridge, Addison County, Democrat, was raised and educated in the Champlain Valley. Following graduation from Jeanne Mance School of Nursing, she married Alan Ayer. In 1979, they settled in Weybridge where they raised their three children. Ayer is a registered nurse with a degree in environmental studies from Middlebury College. Past activities include: Weybridge School Board (Chair), Middlebury Area Land Trust, Vermont Association of Conservation Districts (President), and National Association of Conservation Districts (Executive Board), and Justice of the Peace. She is a member of the Sigma Theta Tau International Honor Society of Nursing and the American Legion Auxiliary. Ayer served as a member of the Electoral College in 2008. During her first two terms in the Vermont Senate, Ayer served on Senate Agriculture, Senate Transportation, Senate Finance, and as Vice Chair of Natural Resources and Energy. She also served on the Judicial Retention and Health Access Oversight committees. She was elected to serve on the UVM Board of Trustees for six years. At UVM, she serves as Chair of the College of Agriculture Board of Trustees, and Vice Chair of the Educational Policy and Institutional Resources Committee. In her third and fourth terms in the Vermont Senate, Ayer was elected to serve as Senate Majority Whip. She was appointed to serve as Vice Chair of Senate Finance and to represent the Senate on the Lake Champlain Basin Committee. Home phone: 545-2142. POST OFFICE ADDRESS: 504 Thompson Hill Road, Weybridge, VT 05753.

ADDISON COUNTY



HAROLD W. GIARD of Bridport, Addison County, Democrat, was educated at Bridport Elementary School, Middlebury Union High School, and St. Michael's College. Occupation: Dairy farmer and small business owner. He is married to Shirley and they have a daughter, Sara. He was a member of the Vermont House of Representatives from 1972 through 1980. Member of the Senate: 2005-2006, 2007-2008, 2009-2010. Home phone: 758-2577. POST OFFICE ADDRESS: 1786 Crown Point Road, Bridport, VT 05734.

BENNINGTON COUNTY

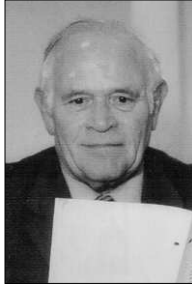


ROBERT M. HARTWELL of Dorset, Bennington County, Democrat, was born in New York City and raised in Greenwich, Connecticut. Before moving to Vermont in 1994, Bob was admitted to practice law in New York and Connecticut. He practiced law in Fairfield, Connecticut before being employed as a labor attorney at American Can Company, a Fortune 100 corporation. Bob was appointed Labor Counsel for the Company's packaging sector in 1982 and was responsible for the legal compliance of the Company's equal opportunity, affirmative action and employee safety programs; in addition, he handled labor arbitrations, unfair labor practice charges and managed outside counsel. Later, Bob was of counsel to law firms in New York City and Stamford, Connecticut before moving to Vermont where he was engaged in the practice of law in Manchester with emphasis on land use and real estate transactions. Bob served on the Town of Dorset Planning Commission, 1995-2001 and was Chair, 1996-1999; he served on the Dorset Selectboard, 2001-2004, and served on the Bennington County Regional Commission from 1997 to 2001 and was Chair from 2001 to 2007. He also serves as the president of the Executive Committee of the New England Association of Regional Counsels, the umbrella organization for New England regional planning. Bob has served as an Acting Judge in the Windsor Superior Court and is a member of the Board of Trustees of the Vermont Land Trust. Member, Vermont State Senate, 2007-2008, 2009-2010. Address: Box 1105, Manchester Center, Vermont 05255. Contact: 362-5757 Home fax 362-5758 rmhwelvt@yahoo.com

THE SENATE

RICHARD W. SEARS, JR., of Bennington, Bennington County, Democrat, was born in Framingham, Massachusetts, on April 22, 1943, and became a resident of Bennington in 1971. Occupation: Worked in residential programs for troubled youth for over 35 years. Retired 1/1/2006. He was educated in schools in Ashland, Massachusetts; New Hampton School, New Hampton, New Hampshire; University of Vermont, Burlington, Vermont (B.A., 1969). He is married to the former Beverly Bushey. Member of: Bennington Select Board, 1987-93, chairman for four years; Elks Lodge #567. Member of the Senate: 1993-94, 1995-96, 1997-98, 1999-2000, 2001-2002, 2003-2004, 2005-2006, 2007-2008, 2009-2010. Religious preference: Congregational. Home phone: 442-9139. Email: rsears@leg.state.vt.us POST OFFICE ADDRESS: 343 Matteson Road, North Bennington, VT 05257.

BENNINGTON COUNTY



MATTHEW A. CHOATE of St. Johnsbury, Caledonia County, Democrat, was born on May 6, 1971, in St. Johnsbury and has been a lifelong resident. Occupation: Registered Nurse/Nurse Manager at Dartmouth Hitchcock Medical Center, Lebanon, New Hampshire. He was educated at the University of Vermont, Burlington, Vt. (B.S. – Biochemistry, 1992; B.S.N. – Nursing, 1997); and is currently enrolled in the MBA Program at Northeastern University, Boston, Massachusetts. Memberships: CALEX Ambulance Service, St. Johnsbury (1987-2007); President, Board of Directors, CALEX Ambulance Service; Member, VT Emergency Nurses Association (1997-Present); President-Elect, VT Emergency Nurses Association (2007-09); Corporator, NVRH, St. Johnsbury (2004-Present). Member of the Senate: 2009-2010. Home Phone: (802) 748-2629. POST OFFICE ADDRESS: 87 Cliff Street, St. Johnsbury, VT 05819.

CALEDONIA COUNTY



JANE KITCHEL of Danville, Caledonia County, Democrat, was born in St. Johnsbury, Vermont, on August 23, 1945; growing up in Danville on the family farm. Occupation: Public Administrator. Retired from the State of Vermont, former Secretary, Agency of Human Services. Jane was educated in Danville Schools, graduating from Danville High School in 1963; Wilson College, Chambersburg, Pennsylvania (A.B., 1967); Toll Fellow, Council of State Governments, 1994. She is married to Robert Kitchel and they have one son. Jane is Former President, Board of Trustees, Fairbanks Museum and Planetarium (St. Johnsbury, Vt.); Secretary, Danville Chamber of Commerce; Corporator, Northeastern Vermont Regional Corporation; Fairbanks Museum Fellow; Board Member, Vermont Food Bank, Member, Board of Directors of the Northeastern Vermont Area Health Education Center; Member, Danville Congregational Church. Member of the Senate: 2005-2006, 2007-2008, 2009-2010. Home Phone: 684-3482. POST OFFICE ADDRESS: P.O. Box 82, Danville, VT 05828.

CALEDONIA COUNTY



THE SENATE

CHITTENDEN COUNTY



TIM ASHE of Burlington, Chittenden County, Democrat/Progressive, was born in Framingham, MA on December 10, 1976. Tim graduated from the University of Vermont in 1999, and received a Masters in Public Policy from Harvard University's Kennedy School of Government in 2004. Tim is the Project Manager for Cathedral Square, a non-profit developer of affordable housing for seniors and people with disabilities. Tim served on the Burlington staff of Congressman Bernie Sanders from 1999-2001. Tim was elected to the Burlington City Council in 2004, and won re-election in 2005 and 2007. He chaired the Council's Community Development and Neighborhood Revitalization Committee, and currently serves on the Board of Finance. Tim served on the Board of Directors of Spectrum Youth and Family Services.

CHITTENDEN COUNTY



EDWARD S. FLANAGAN of Burlington, Chittenden County, Democrat, was born in Washington, D.C., on December 18, 1950. Occupation: attorney. He was educated at Gonzaga High School, Washington, D.C.; and Northfield-Mt. Hermon School, Northfield, Massachusetts; University of Pennsylvania, Philadelphia, Pennsylvania (B.A., history/political science, 1973); Harvard University, Cambridge, Massachusetts (J.D., 1976). He worked in the U.S. Senate under the patronage of Senator George D. Aiken and in the U.S. Department of Justice during summers of college and law school; policy analyst in the Office of the U.S. Secretary of Health, Education & Welfare with oversight responsibilities for the Food & Drug Administration and National Institutes of Health, 1978-79; associated with the law firm of Hoff, Curtis, P.C. in Burlington, 1988-1993; Champlain College Instructor (2004); Vermont Public Research Interest Group (Board of Directors, 2001-present); member of the Capital Debt Affordability Advisory Committee (1993-2001); Vermont Historical Society, Board of Directors (1993-2001). Auditor of Accounts: 1992, 1993-1994, 1995-96, 1997-98, 1999-2000. Member of the Senate: 2005-2006, 2007-2008, 2009-2010. Home phone: 862-3203. POST OFFICE ADDRESS: 131 Main Street #702, Burlington, VT 05401.

CHITTENDEN COUNTY



VIRGINIA LYONS of Williston, Chittenden County, Democrat, was born September 24, 1944, in Auburn, New York, and has been a resident since 1974. Occupation: College Professor at Vermont State Colleges part time; Previous employer Trinity College, VT 27 years. She is married to Richard Lyons, MD, and they have two daughters. She was educated at Drew University, Madison, NJ AB; Rutgers the State University, New Brunswick, NJ MS; University of Vermont, Burlington, VT Doctorate. Attended other schools and had postgraduate work in Sciences. Former member and Chair of Williston Select Board, alternate member Chittenden County Regional Planning Commission and subcommittees member, Board member CVAHEC, Parent to Parent, FAHC Children's Hospital Advisory Council member, VT Champlain Citizen Advisory Committee, Petroleum Clean up Fund, Mercury Advisory Committee, VCRD Council on Energy, Governor's Commission on Climate Change, Mediated Modeling, and others. In the Senate: Agriculture Committee Vice Chair 2001-02, Senate Health and Welfare Committee Vice Chair 2000-02, member 2002-06, Natural Resources and Energy Committee member 2000-02, Chair 2002-06, Joint Energy Committee 2002-06, Co-Chair VT Committee on International Trade 2006-. POST OFFICE ADDRESS: 241 White Birch Lane, Williston, VT 05495 (802) 863-6129.

THE SENATE

HINDA MILLER of Burlington, Chittenden County, Democrat, has been a Vermont State Senator since 2003, as vice chair of economic development committee and member of appropriations committee. She has championed legislation promoting small business, the creative/ green economies, complementary medicine as part of quality healthcare, and the new housing legislation. She co-chairs CHEF and sits on the Commission on the Future of Economic Development. Before her life in the Vermont Senate, she enjoyed a successful career as an entrepreneur, corporate executive, visiting university professor, corporate director, and community activist. In 1977, she co-founded Jogbra, Inc., the original maker of the “jogbra” women’s sports garment. After growing the business into a national brand and selling the company to Sara Lee Corp, Hinda continued on as President, CEO & Spokesperson from 1990-1997. Ms Miller is a board member of Green Mountain Coffee Roasters [GMC], former board member of New England Culinary Institute [NECI] and a Trustee Emeritus of Champlain College. Hinda believes that a strong inner voyage for self-knowledge is the foundation of a successful and purposeful life. She has continually tried to bring spiritual practice into worldly endeavors. In that journey, she has been a student/teacher of yoga for over 30 years and embraces all who work with light and love. A resident of Burlington, VT since 1977, she lives with her husband, Dr. Joel Miller, and their two children. She received a BFA from Parson’s School of Design & MFA from New York University as well as an Honorary Doctorate of Humane Letters from Trinity College.

CHITTENDEN COUNTY



DOUGLAS A. RACINE of Richmond, Chittenden County, Democrat, was born in Burlington, Vermont, on October 7, 1952. He was educated in Burlington, graduating from Burlington High School in 1970. He graduated with honors from Princeton University, Princeton, New Jersey in 1974. He worked for U.S. Senator Patrick J. Leahy as a legislative assistant in Washington and Montpelier from 1975 to 1978. He served 5 terms in the State Senate representing Chittenden County from 1983 to 1992. He served on the Senate Appropriations Committee and was chair of the Senate Natural Resources and Energy Committee. In 1989, he was elected to serve as president pro tempore and served in this position until 1992. He was elected Lieutenant Governor in 1996 and served 3 terms in that role from 1997 to 2002. He is a small business owner serving as vice president of Willie Racine’s Jeep/Isuzu, Inc. He serves on the Mount Mansfield Union school board, having been elected to that role in 2005. Member of the Senate: 1983-84, 1985-86, 1987-88, 1989-90, 1991-92, 2007-2008, 2009-2010. President pro tempore, 1989-92. Lieutenant Governor: 1997-98, 1999-2000, 2001-2002.

CHITTENDEN COUNTY



THE SENATE

CHITTENDEN COUNTY



DIANE B. SNELLING of Hinesburg, Chittenden County, Republican, was born in Philadelphia, Pennsylvania, on March 18, 1952; became a resident of Hinesburg in 1983. Occupation: Artist. She was educated at Champlain Valley Union High School, Hinesburg, Vermont (1970); Harvard/Radcliffe College, Cambridge, Massachusetts (A.B./V.E.S., 1974); New York University, New York City, New York (M.A./Art, 1994). Organizations: Hinesburg Planning Commission, 1984; Hinesburg Select Board (two 3 year terms), 1985-1991; Greater Burlington Industrial Corporation, Board of Directors, 1985-1991; Chittenden Affordable Housing Committee, 1989-1990; King Street Youth Center, Board of Trustees, 1992-1995; Robert Hull Fleming Museum Advisory Board, 1994-2001; Lecturer, Art and Communications, Trinity College of Vermont, 1994-1997; The Richard A. Snelling Center for Government, Board of Directors, 1991- present. Appointed to the Senate to complete Barbara Snelling's term in January 2002. Member of the Senate: 2002-2004, 2005-2006, 2007-2008, 2009-2010. Committees: Appropriations, Natural Resources and Energy. Also, Joint Fiscal Committee, Legislative Committee on Administrative Rules, Mental Health Oversight Committee. Home phone: 482-4382. POST OFFICE ADDRESS: 304 Piette Road, Hinesburg, Vermont 05461.

ESSEX- ORLEANS COUNTY



VINCENT ILLUZZI of Derby, Orleans County, Republican, was born in Montpelier, Vermont, on September 17, 1953. Occupation: attorney. He was educated at Berlin Elementary School; St. Monica's Graded School, Barre; Marian High School, Barre; St. Michael's College, (A.B., 1975); Vermont Law School, (J.D., 1978). He was first elected to the Vermont Senate at age 27, making him the youngest person ever to have served in the Senate since it was created in 1836. He is married to Eileen Maher. They have one son, Vincent. He has served as a member of: Governor's Committee on Children and Youth; Governor's Commission on the Administration of Justice; student representative to the State Board of Education; Vermont Law School, board of trustees; and the Dartmouth Hitchcock Medical Center Assembly of Overseers. He was elected as Essex County state's attorney in November, 1998, 2002 and 2006. He received the Democratic nomination for state senator in the 1998, 2000, 2002, 2006 and 2008 elections from write-in votes on the Democratic Party primary ballot. Member of the Senate: 1981-82, 1983-84, 1985-86, 1987-88, 1989-90, 1991-92, 1993-94, 1995-96, 1997-98, 1999-2000., 2001-2002, 2003-2004, 2005-2006, 2007-2008, 2009-2010. Assistant Minority leader: 1985-86, 1987-88; Assistant Republican leader, 1991-92, 1997-98, 1999-2000, 2001-2002, 2003-2004. Republican leader, 2005. Home phone: 334-2807. E-mail: villuzzi@leg.state.vt.us. Post Office Address: 527 Ridgehill Drive, Newport, VT 05855.

ESSEX- ORLEANS COUNTY



ROBERT A. STARR of Troy, Orleans County, Democrat, was born in Hartford, Connecticut on December 17, 1942, and became a resident of present town on June 3, 1944. He is married to the former Anita Cadieux, and they have one son. Occupation: president, Starr's United, Inc., d/b/a Starr's Transportation. He was educated in elementary schools in North Troy, Vermont, North Troy High School and Vermont Technical College, Randolph, Vermont (associate degree in agriculture). Member of: Troy school board; O.E.N.S.U. school board; Troy zoning board and planning commission; Board of Civil Authority; Troy town moderator; North Country High School, moderator; Vermont State College trustee; Vermont Truck and Bus Association, director; Elks Club #2155, Newport; National Conference of State Legislatures. Chair of the House Agriculture Committee, 1985-2000. Member of the House: 1979-80, 1981-82, 1983-84, 1985-86, 1987-88, 1989-90, 1991-92, 1993-94, 1995-96, 1997-98, 1999-2000, 2001-2002 (House Agriculture Committee), 2003-2004. Member of the Senate: 2005-2006, 2007-2008, 2009-2010. Religious preference: Protestant. Home phone: 988-2877; Office: 988-2281 or 2282. Post Office Address: 958 Route 105W, North Troy, VT 05859.

THE SENATE

RANDOLPH D. BROCK of Swanton, Franklin County, Republican, was born in Philadelphia, Pennsylvania on September 28, 1943, and became a resident of his present town in 1986. He was previously a resident of Addison County. He and his wife, Andrea, have one daughter. Brock holds a bachelors degree from Middlebury College and a masters degree from Yale University. He served as Vermont's 28th Auditor of Accounts from 2005 to 2007. He retired in January 2003 as executive vice president, risk oversight, for Fidelity Investments. He was previously the firm's general auditor. A Vietnam veteran, Brock left the Regular Army as a captain in the Military Police Corps. He holds the Bronze Star Medal for meritorious service and the Army Commendation Medal with 1st Oak Leaf Cluster. He is a Certified Fraud Examiner. Brock is a member of the National Board of Directors of the Alzheimer's Association (chair, Audit Committee) and is vice chair of the board of the Hodges University Foundation. He is a trustee both of the Vermont Historical Society and of the Vermont Law School. He previously served as chairman of the State Board of Private Investigative and Security Services and as a director of the Vermont Educational and Health Buildings Finance Agency. The White House has announced that President Bush intends to appoint Brock to the Board of Visitors to the United States Military Academy for a three year term commencing December 31, 2008. Home phone: 868-2300. Post Office Address: 2396 Highgate Road, St. Albans, VT 05478.

FRANKLIN COUNTY



SARA BRANON KITTELL of Fairfield, Franklin County, Democrat, was born in Burlington, Vermont, on November 8, 1946, grew up and resides in Fairfield. Occupation: Nurse/former small business owner. She attended Fairfield Elementary School, Fairfield, Vermont; St. Mary's High School, St. Albans, Vermont; Jeanne Mance School of Nursing, Burlington, Vermont (R.N., 1967); University of Vermont, Burlington, Vermont (B.S.N., 1981). She is married to William Kittell, and they have three daughters. Member of: Democratic County Committee; Board Member: Vermont Fresh Network, Franklin/Grand Isle Early Childhood Council, Vermont Children's Aid Society. Member of the Senate: 1995-96 (appointed on June 19, 1995), 1997-98, 1999-2000, 2001-2002, 2003-2004, 2005-2006, 2007-2008, 2009-2010. Senate Agriculture Committee, chair, 1997-2008. Northeast States Association of Agriculture Stewardship, 1997-2004, chair, 2004. Religious preference: Catholic. Home phone: 827-3274. POST OFFICE ADDRESS: 437 Chester Arthur Road, Fairfield, VT 05455.

FRANKLIN COUNTY



RICHARD T. MAZZA of Colchester, Chittenden County, Democrat, was born in Colchester, Vermont on September 4, 1939, and is a lifelong resident. Occupation: self-employed grocer of Dick Mazza's General Store in Colchester which opened in 1954. He was educated in elementary schools in Colchester and at Winooski High School. He is married to the former Dorothy D. Hinds and together they have one son, one daughter and four grandchildren. Member of: Champlain Valley Fair, board of directors; Colchester Senior Citizens Housing Project, president. Member of the House 1973-76 (Transportation Committee; Legislative Council). Member of the Senate: 1985 - present. Senate Transportation Committee, chair, 1991 - present; Senate Institutions Committee, vice-chair, 1991 - present; Joint Transportation Oversight Committee, chair; Committee on Committees, third member, 1997-present. Religious preference: Catholic. Home phone: 863-1067. Post office address: 777 West Lakeshore Drive, Colchester, VT 05446-1539.

GRAND ISLE COUNTY



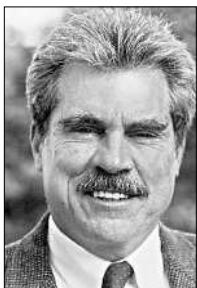
THE SENATE

LAMOILLE COUNTY



SUSAN J. BARTLETT of Hyde Park, Lamoille County, Democrat, was born in Fall River, Massachusetts, on December 18, 1946. She graduated from Orleans High School, Orleans, Vermont in 1964; University of Vermont, Burlington, Vermont 1968; Johnson State College, Johnson, Vermont Masters in Educational Administration, 1976. She is married to William A. Bartlett. Member of the Senate: 1993-94, 1995-96, 1997-98, 1999-2000, 2001-2002, 2003-2004, 2005-2006, 2007-2008, 2009-2010. Religious preference: Congregational. Phone: 888-5591. POST OFFICE ADDRESS: P.O. Box 123, Hyde Park, VT 05655.

ORANGE COUNTY



MARK A. MACDONALD of Williamstown, Orange County, Democrat, was born in Middletown, Connecticut, on December 18, 1942. He has spent summers in Vermont since 1947 and became a permanent resident in September, 1974. Occupation: teacher/farmer. He was educated in elementary schools in New Jersey and Washington, D.C.; Clark University, Worcester, Massachusetts (B.A., 1972); attended Norwich University, Northfield, Vermont, 1975-76 to attain teacher's certification. He is married to the former Roberta Pilk, and they have three children; Max, Janet and Rustie. Member of: Williamstown Planning Commission, 1984-1994; Vermont Beef Producers Association; Chelsea Fish and Game Club; Orange County Farm Bureau; American Legion; Orange Southwest Teachers Association; Vietnam Veterans of America. He served in the U.S. Army, 1968-1970, with eighteen months of service in Vietnam in 1969 and 1970. Member of the House: 1983-84 (seated July 19, 1983), 1985-86, 1987-88, 1989-90, 1991-92, 1993-94. Member of the Senate: 1997-98, 2003-2004, 2005-2006, 2007-2008, 2009-2010. Home phone: 433-5867. POST OFFICE ADDRESS: 404 Macdonald Road, Williamstown, VT 05679.

RUTLAND COUNTY



WILLIAM H. CARRIS of West Rutland, Rutland County, Democrat, was born in Hanover, NH, on August 23, 1944, and raised in Rochester, Ludlow and Rutland (from 1952). He was educated in local schools, graduating from Rutland High School and Castleton State College in Castleton, VT. Bill served three years in the US Army. He married Barbara Tracy in 1967 and they have four children: Tracy, Jennifer, Jesse, and Emily. Bill worked in the family business (Carris Reels, Inc.) and purchased it in 1982. Presently it is 65% employee owned. He has been involved in a wide range of business, arts, and community service over the years. Contact information: Home phone: 802-438-5391 Work phone: 802-773-9111 Email: bill.carris@carris.net POST OFFICE ADDRESS: P.O. Box 886, Rutland, VT 05701.

THE SENATE

HULL P. MAYNARD, JR. of Shrewsbury, Rutland County, Republican, was born in Hartford, Connecticut, on August 8, 1934, and became a resident of present town on December 1, 1962. Occupation: independent insurance agent. He was educated in elementary schools in Windsor, Connecticut; Loomis-Chaffee School, Windsor, Connecticut; Middlebury College, Middlebury, Vermont and attended the University of Connecticut Law School. He is married to the former Joanna Taft, and they have two daughters, Jill and Sarah, and two sons, Hull III and Todd. Member of: National Federation of Independent Business (past member of the Guardian Council); Shrewsbury justice of the peace; Rutland Chamber, Legislative Issues Committee; former Shrewsbury overseer of the poor, civil defense chair, and planning commission member; Rutland Rotary, past president; Independent Insurance Agents of Vermont, past president; Rutland Mental Health, past president and board member. He served as an Executive Officer/Field Artillery in Korea, 1957-58. Member of the Senate: 1997-98, 1999-2000, 2001-2002, 2003-2004, 2005-2006, 2007-2008, 2009-2010 (2000-2004, Judicial Nominating Committee; 2004-2006, Judicial Retention Committee). Religious preference: Congregational. Home Phone: 773-2087. POST OFFICE ADDRESS: 7983 Cold River Road, Shrewsbury, VT 05738.

RUTLAND COUNTY



KEVIN J. MULLIN of Rutland Town, Rutland County, Republican, was born in Rutland, Vermont, on November 19, 1958. Occupation: Owner of Finger Lakes Drive-in. He was educated at Rutland High School, Rutland, Vermont and Castleton State College, Castleton, Vermont (B.S., Business, Finance Major). He and his wife Cynthia have two children, Brett and Bartley. Former member; Rutland Town school board, former member; Rutland Town board of auditors; Vermont State Transportation Board; Community Development Block Grant Board; Rutland Regional Planning Commission; Rutland City board of aldermen; Little League coach; soccer and basketball coach; Marble Valley Regional Transit District, former vice-chair; Rutland Region Chamber of Commerce Legislative Issues Committee, former chair. Member, Health Care Return Commission, Health Access Oversight Committee and Natl. Leg. Assoc. on Fair Prescription Drug Pricing, Vermont Public Sector Chair, American Legislative Exchange Council, Asst. Senate Minority Leader 2005-present. Appointed to the Senate: January 2003. Member of the Senate: 2004, 2005-2006, 2007-2008, 2009-2010. Member of the House: 1999-2000, 2001-2002, 2003-2004. Home phone: 775-7631. POST OFFICE ADDRESS: 118 Oxyoke Drive, Rutland, VT 05701.

RUTLAND COUNTY



ANN E. CUMMINGS of Montpelier, Washington County, Democrat, was born in Holliston, Massachusetts, on July 20, 1946, and became a resident of present town in November, 1975. She is married to Regis E. Cummings, and they have three daughters and one son. Occupation: Realtor. She was educated in elementary schools in Wantagh, New York and Lexington, Kentucky; Lexington Catholic High School, Lexington, Kentucky; Cardinal Cushing College, Brookline, Massachusetts (B.A., 1968); St. Michael's College, Winooski, Vermont (M.S.A., 1989). She is the former mayor of Montpelier. Member of: Vermont Student Assistance Corp. (VSAC) Board of Directors; USS Montpelier Association (honorary member); Former Member: Vermont Commission on Women, Vermont Handcrafters, Central Vermont Community Action Council. Member of the Senate: 1997-98, 1999-2000, 2001-2002, 2003-2004, 2005-2006, 2007-2008, 2009-2010. Religious preference: Catholic. Home phone: 223-6043. POST OFFICE ADDRESS: 24 Colonial Drive, Montpelier, VT 05602.

WASHINGTON COUNTY



THE SENATE

WASHINGTON COUNTY



WILLIAM T. DOYLE of Montpelier, Washington County, Republican, was born in New York, New York, on May 8, 1926, and became a resident of present town in 1959. He is married to the former Olene Ottaway, and they have two sons and one daughter. Occupation: professor of government, Johnson State College, 1958-present; author and publisher. He was educated at Spring Lake Grammar School, New Jersey; Manasquan High School, New Jersey; Lawrenceville School; Princeton University (1949); Columbia University (Master's Degree in 1955 and Doctorate in 1960). Member of: Republican city and county committees and delegate to the Republican National Convention, 1976 and 1988; Wage Board, chair, Department of Labor and Industry, 1967; Montpelier School Board (1964-68, chair, 1967-68); Union District High School #32 School Board, 1967-68; advisory committee of Barre Area Vocational High School, 1965-68; Council of State Governments, Eastern Region, executive committee; Vermont Historical Society, former trustee, 1979-85; Vermont Statehood Bicentennial Committee; Trustee, Woodbury College; Board member, Vermont Mountaineers. Member of the Senate: 1969-70, 1971-72, 1973-74, 1975-76, 1977-78, 1979-80, 1981-82, 1983-84, 1985-86, 1987-88, 1989-90, 1991-92, 1993-94, 1995-96, 1997-98, 1999-2000, 2001-2002, 2003-2004, 2005-2006, 2007-2008, 2009-2010. Religious preference: Congregationalist. Home phone: 223-2851. POST OFFICE ADDRESS: 186 Murray Road, Montpelier, VT 05602.

WASHINGTON COUNTY



PHIL SCOTT of Montpelier, Washington County, Republican, was born in Barre, Vermont, on August 4, 1958. He graduated from Spaulding High School in 1976 and the University of Vermont in 1980. He has two daughters, Erica and Rachael. Phil is co-owner of DuBois Construction in Middlesex, a past president of the Associated General Contractors, and serves as a corporator of Northfield Savings Bank. Phil is a well known stock car racer, winning numerous races and titles throughout the northeast. Member of the Senate since 2001, serving as vice chair of Transportation and chair of Institutions Committees. Home phone: (802) 223-5135. Work phone: (802) 223-5288. Email: pscott14@aol.com. Mailing address: 20 Fuller Street, Montpelier, VT 05602.

THE SENATE

PETER SHUMLIN of Putney, Windham County, Democrat, was born in Brattleboro, Vermont, on March 24, 1956, and has lived in Putney/Westminster all of his life. Occupation: educator/business owner/ dairy farmer. He was educated in elementary schools in Putney, Vermont; graduated from Buxton School, Williamstown, Massachusetts; Wesleyan University, Middletown, Connecticut (B.A., 1979). He is married to Deborah Holway Shumlin (also born and raised in Putney), and they have two daughters, Olivia and Rebecca. Member of: Board of Selectmen, chair for six years; Landmark College, Putney, Vermont, board of trustees. He has served on: Windham Regional Commission; Putney Grammar School, board of trustees; Yellow Barn Music Festival; Putney Family Services. Member of the House: 1990 (seated January 3, 1990), 1991-92. Member of the Senate for 10 years: 1993-2002. After his first term in the Senate he was elected Senate Minority Leader where he focused on re-gaining the Democratic majority for his caucus. At that time there were 11 Democrats and 19 Republicans in the Vermont Senate. After one term as Minority Leader, the Democrats captured the majority and he was elected President pro-tempore for the following six years: 1997-2002. In that capacity Peter served as chair of the Finance Committee, chair of the Senate Rules committee, as a member of the Transportation and Appropriations Committees and as a founding member of NLARX, a national legislative organization dedicated to reducing prescription drug prices. In 2002 he ran unsuccessfully for Lieutenant Governor and returned to private life for the following four years. In 2006 he was re-elected to the Senate and his colleagues elected him to return as President pro-tempore. Senate office phone: 802-828-3806. Home phone: 802-387-4447. Work phone:802-387-5000. POST OFFICE ADDRESS: 345 Hickory Ridge Rd, Putney,VT 05346.

WINDHAM COUNTY



JEANETTE WHITE of Putney, Windham County, Democrat, was born on May 2, 1943, in Thief River Falls, Minnesota, and moved to Vermont in 1972. She received her Bachelor's Degree from the University of Iowa, Iowa City, Iowa in political science and sociology in 1965 and her Master's Degree in Community Development and Community Education in 1972 from Southern Illinois University, Carbondale, Illinois. She is married to Bill White and they have two grown children, Laurie and Josh. Member of the Senate: 2003-2004, 2005-2006, 2007-2008, 2009-2010. Home phone: 387-4379. POST OFFICE ADDRESS: 35A Old Depot Road, Putney, VT 05346.

WINDHAM COUNTY



JOHN F. CAMPBELL, a Democrat, lives in Quechee, Vermont. He was born in New Hyde Park, New York, on March 3, 1954. He is the senior partner at the law firm of Campbell and Saunders, LLP and is licensed to practice law in Vermont and Florida. He received his Bachelor of Science Degree from the University of Florida in 1976 and received his Juris Doctor Degree from Nova University in 1983. He is married to Kathy and they have three children, John Jr., Meghan, and Ryan. Member of the Senate: 2001-2002, 2003-2004 (Democratic Majority Leader), 2005-2006 (Democratic Majority Leader), 2007-2008 (Democratic Majority Leader), 2009-2010. Religious preference: Catholic, Work Phone: (802) 295-1111, Home Phone: (802) 295-6238. Mailing Address: P.O. Box 1221, Quechee, VT 05059.

WINDSOR COUNTY



THE SENATE

WINDSOR COUNTY



RICHARD "DICK" MCCORMACK of Bethel, Windsor County, Democrat, was born on July 20, 1947, in New York City, New York. He became a resident of present town in 1970. Occupation: College Instructor, Consultant and Performer. He was educated Hofstra University, Bachelors Degree (U.S. History - 1970); at Castleton State College, Secondary Education Studies, (1977-78); Vermont Law School, Masters Degree (cum laude - 2002). He is married to Cindy Metcalf and they have five grown children between them and two granddaughters. Board Service: Vermont Public Interest Research Group, Adult Basic Education, AIDS Community Resource Network, Emerge Family Access Center, Champlain Valley Folk Festival, Earth Right Institute, Operation Laundry List, Vermont Sierra Club. Public Service: District III Environmental Commission (Chair 1986-1989); Justice of the Peace (1984-89). Majority Leader (1997-2001). Service on Standing Committees: Health and Welfare, Education, General Affairs and Housing, Judiciary (Vice-Chair), Institutions, Natural Resources and Energy (Chair), Finance, Judicial Rules, Legislative Rules, Administrative Rules. Legislative Honors: ACLU David W. Curtis Civil Liberties Award, 2002. Greater Burlington Industrial Corporation Award for Leadership in the Passage of the 2002 Storm Water Runoff Legislation. Vermont Council for Gifted Education Friend of the Gifted Award, 1996. Legislator of the Year Award from Vermont Businesses for Social Responsibility (VBSR) 2008. Save the Greyhound Dogs Friend of the Greyhounds Award, 1995. Appointed to the Senate in 1989 and Elected 1990, 92, 94, 96, 98, 2000, 06, 08. POST OFFICE ADDRESS: 127 Cleveland Brook Road, Bethel, Vermont 05032, 802-234-5497. rmccormack@leg.state.vt.us.

WINDSOR COUNTY



ALICE W. NITKA of Ludlow, Windsor County, Democrat, was born December 13, 1944, in Little Falls, New York, and became a resident of present town in 1969. Occupation: She is employed by Eckerd Youth Alternatives, Inc., an agency providing services to children. She was formerly employed as a social worker for more than thirty years specializing in adoptions. She was educated at Williamstown Public Schools, Williamstown, Massachusetts; Vincentian Institute, Albany, New York; Russell Sage College, Troy, New York (B.A., 1967). She is married to Martin Nitka, and they have two daughters, Abigail and Molly. Member of: Calvin Coolidge Memorial Foundation, Board of Trustees; Ludlow Board of Civil Authority; Seante Chair, Vermont Legislative Sportsmen's Caucus; Vermont Foster and Adoptive Families Association; Black River Valley Rod and Gun Club and serves as a Justice of the Peace. Past member of: Ludlow Planning Commission and Zoning Board of Adjustment, chair. Member of the Senate: 2007-2008, 2009-2010. Member of the House: 1999-2000, 2001-2002, 2003-2004, 2005-2006. Home phone: 228-8432. POST OFFICE ADDRESS: North Hill, P.O. Box 136, Ludlow, VT 05149.